

EPSILON mathematicians, physicists and computer scientists are processing data, searching for correlations or links, interpreting and representing results.



## Pre-treatment / Acquisition

- Workshop organization to assess needs,
- Processing (cleaning) often heterogeneous and massive data.

## Analysis

- Developing specific algorithms for data analysis,
- Tests of machine learning, data mining and text mining methods,
- Detection of correlations and links between data.



## Post-processing / Visualization

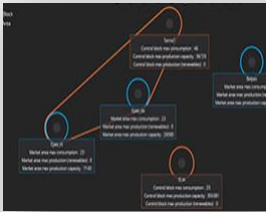
- Dashboard, Dedicated WEB Sites,
- Application development, AI maintenance.

Founded in 1992 to conduct studies in the space sector, EPSILON is developing in Europe and Morocco at the convergence of physical engineering, software and finally scientific systems.

## Some achievements

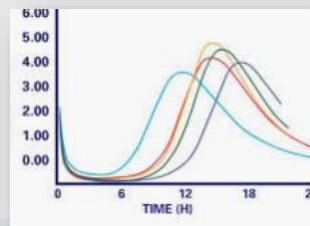
### Electrical wiring network optimization and visualization tool

Massive Data Analysis,  
Graphic Interface Creation  
Spreadsheet, Dynamic schemes



### Consumer data analytics tool

Improving understanding and anticipation of consumer behaviour (waste generation)



### Logistics optimization tool

Improving the efficiency and profitability of an assembly line



## Our know-how

**Physics** Modeling, simulation, analysis, optimization, from component to system,

**IT** Development of processing software, analysis and enhancement of technical and scientific data,

**System** Design and supply of scientific equipment,



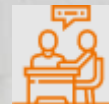
Physics



Digital



System



Consulting